



NOTE: DRAWING NOT FOR MANUFACTURING PURPOSES

CODE	TUBE OUTSIDE DIAMETER "A" (mm)	TUBE WALL THICKNESS "C" (mm)	RATED VOLTAGE (kV RMS)	COLOUR	SAP NUMBER
ETEC-PL-A;80/8	80	8	145	—	0401647
ETEC-PL-C;120/4	120	4	145	—	0206319
ETEC-PL-C;120/6	120	6	145	—	0588582
ETEC-PL-F;200/6	200	6	800	—	0588583
ETEC-PL-F;200/6R	200	6	800	RED	0589023
ETEC-PL-F;200/6W	200	6	800	WHITE	0589024
ETEC-PL-F;200/6B	200	6	800	BLUE	0589025
ETEC-PL-G;250/6	250	6	800	—	0588584
ETEC-PL-G;250/6R	250	6	800	RED	0589026
ETEC-PL-G;250/6W	250	6	800	WHITE	0589027
ETEC-PL-G;250/6B	250	6	800	BLUE	0589016


APPLICATION NOTE: IN CHOOSING THE END CAP TO BE USED THE APPLICABLE TUBE OUTSIDE DIAMETER AS WELL AS TUBE WALL THICKNESS MUST BE CONSIDERED.

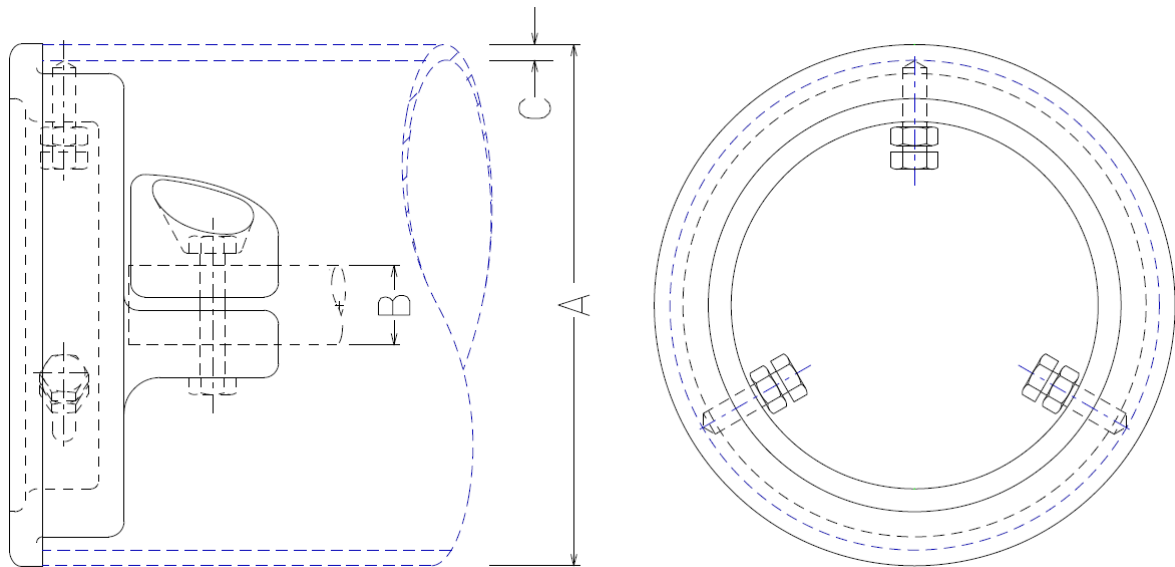
ITEM		:- CLAMP, TUBE: ETEC-PL; PLAIN END CAP							
STANDARD UNIQUE IDENTIFIER		:- 240-53113923							
6	CLAMP CODES & DESCRIPTIONS CORRECTED, ADDED ITEM: CLAMP,TUBE:ETEC-DC-E;160/6;26.5C-ENDCAP			JUSTICE SHINTA	STEFAN TERBLANCHE	THEUNS MARAIS	04.11.2020		
5	ITEM TABLES ADDED, ADDITIONAL ITEMS ADDED, SAP NUMBERS CHANGED, SHORT AND TECHNICAL DESCRIPTIONS CHANGED AND STANDARD UNIQUE IDENTIFIER ADDED			P.A.T.	MARK PEFFER	THEUNS MARIAS	05.09.2014		
4	DIMENSION CHANGED			P.A.T.	T. NKAMBULE		12.08.2009		
REV	REVISION DESCRIPTION			BY	CHKD	AUTH	DATE	REF. DRAWINGS	
AUTH:	PHIL CROWDY	DATE:	12/96	SCALE	 D-DT-6040		SAP No:		
				NTS					
CHKD:	C.B. CLARK	DATE:	12/96	CAD REF:					
				SERIES 6000					
DRAWN:	J.F.SCHOLTZ	DATE:	10/96	FILE No:			SET	SHEET	REV
				6040			7	1	6

SPEC. SHEET

SAP MATERIAL No.:		0401647						
SHORT DESCRIPTION:		CLAMP,TUBE:ETEC-PL-A;80/8;PLAIN-ENDCAP						
TECH. DESCRIPTION:								
CLAMP, TUBE: TYPE: ETEC-PL-A; COMMERCIAL SIZE: 80/8; PLAIN- ENDCAP; MATERIAL: AI ALLOY< 0.1% Cu; TUBE 1 DIAMETER ACCOMMODATED: 80X8 MM; MAXIMUM OPERATING POTENTIAL: 145 KV; 8MM WALL THICKNESS PLAIN END CAP; ESKOM DRAWING No. D-DT-6040 *								
SAP MATERIAL No.:		0206319						
SHORT DESCRIPTION:		CLAMP,TUBE:ETEC-PL-C;120/4;PLAIN- ENDCAP						
TECH. DESCRIPTION:								
CLAMP, TUBE: TYPE: ETEC-PL-C; COMMERCIAL SIZE: 120/4; PLAIN- ENDCAP; MATERIAL: AI ALLOY< 0.1% Cu; TUBE 1 DIAMETER ACCOMMODATED: 120X4 MM; MAXIMUM OPERATING POTENTIAL: 145 KV; 4MM WALL THICKNESS PLAIN END CAP; ESKOM DRAWING No. D-DT-6040 *								
SAP MATERIAL No.:		0588582						
SHORT DESCRIPTION:		CLAMP,TUBE:ETEC-PL-C;120/6;PLAIN- ENDCAP						
TECH. DESCRIPTION:								
CLAMP, TUBE: TYPE: ETEC-PL-C; COMMERCIAL SIZE: 120/6; PLAIN- ENDCAP; MATERIAL: AI ALLOY< 0.1% Cu; TUBE 1 DIAMETER ACCOMMODATED: 120X6 MM; MAXIMUM OPERATING POTENTIAL: 145 KV; 6MM WALL THICKNESS PLAIN END CAP; ESKOM DRAWING No. D-DT-6040 *								
SAP MATERIAL No.:		0588583						
SHORT DESCRIPTION:		CLAMP,TUBE:ETEC-PL-F;200/6;PLAIN- ENDCAP						
TECH. DESCRIPTION:								
CLAMP, TUBE: TYPE: ETEC-PL-F; COMMERCIAL SIZE: 200/6; PLAIN- ENDCAP; MATERIAL: AI ALLOY< 0.1% Cu; TUBE 1 DIAMETER ACCOMMODATED: 200X6 MM; MAXIMUM OPERATING POTENTIAL: 800 KV; 6MM WALL THICKNESS PLAIN END CAP; ESKOM DRAWING No. D-DT-6040 *								
SAP MATERIAL No.:		0589023						
SHORT DESCRIPTION:		CLAMP,TUBE:ETEC-PL-F;200/6R;PLAIN-ENDCAP						
TECH. DESCRIPTION:								
CLAMP, TUBE: TYPE: ETEC-PL-F; COMMERCIAL SIZE: 200/6R; PLAIN-ENDCAP; MATERIAL: AI ALLOY< 0.1% Cu; TUBE 1 DIAMETER ACCOMMODATED: 200X6 MM; MAXIMUM OPERATING POTENTIAL: 800 KV; 6MM WALL THICKNESS PLAIN END CAP; COLOUR RED (1580-Y90R IN ACCORDANCE WITH SANS 1091) POWDER COATED IN ACCORDANCE WITH SANS 1274; ESKOM DRAWING No. D-DT-6040 *								
SAP MATERIAL No.:		0589024						
SHORT DESCRIPTION:		CLAMP,TUBE:ETEC-PL-F;200/6W;PLAIN-ENDCAP						
TECH. DESCRIPTION:								
CLAMP, TUBE: TYPE: ETEC-PL-F; COMMERCIAL SIZE: 200/6W; PLAIN-ENDCAP; MATERIAL: AI ALLOY< 0.1% Cu; TUBE 1 DIAMETER ACCOMMODATED: 200X6 MM; MAXIMUM OPERATING POTENTIAL: 800 KV; 6MM WALL THICKNESS PLAIN END CAP; COLOUR WHITE POWDER COATED IN ACCORDANCE WITH SANS 1274; ESKOM DRAWING No. D-DT-6040 *								
6	CLAMP CODES & DESCRIPTIONS CORRECTED, ADDED ITEM: CLAMP,TUBE:ETEC-DC-E;160/6;26.5C-ENDCAP			JUSTICE SHINTA	STEFAN TERBLANCHE	THEUNS MARAIS	04.11.2020	
5	ITEM TABLES ADDED, ADDITIONAL ITEMS ADDED, SAP NUMBERS CHANGED, SHORT AND TECHNICAL DESCRIPTIONS CHANGED AND STANDARD UNIQUE IDENTIFIER ADDED			P.A.T.	MARK PEPPER	THEUNS MARIAS	05.09.2014	
4	DIMENSION CHANGED			P.A.T.	T. NKAMBULE		12.08.2009	
REV	REVISION DESCRIPTION			BY	CHKD	AUTH	DATE	REF. DRAWINGS
AUTH:	PHIL CROWDY	DATE:	12/96	SCALE NTS		<div></div> <div>D-DT-6040</div>		
CHKD:	C.B. CLARK	DATE:	12/96	CAD REF:				
				SERIES 6000				
DRAWN:	J.F.SCHOLTZ	DATE:	10/96	FILE No: 6040		SET	SHEET	REV
						7	2	6

SPEC. SHEET


SAP MATERIAL No.:		0589025							
SHORT DESCRIPTION:		CLAMP,TUBE:ETEC-PL-F;200/6B;PLAIN-ENDCAP							
TECH. DESCRIPTION:									
CLAMP, TUBE: TYPE: ETEC-PL-F; COMMERCIAL SIZE: 200/6B; PLAIN-ENDCAP; MATERIAL: AI ALLOY< 0.1% Cu; TUBE 1 DIAMETER ACCOMMODATED: 200X6 MM; MAXIMUM OPERATING POTENTIAL: 800 KV; 6MM WALL THICKNESS PLAIN END CAP; COLOUR BLUE (4050-B IN ACCORDANCE WITH SANS 1091) POWDER COATED IN ACCORDANCE WITH SANS 1274; ESKOM DRAWING No. D-DT-6040 *									
SAP MATERIAL No.:		0588584							
SHORT DESCRIPTION:		CLAMP,TUBE:ETEC-PL-G;250/6;PLAIN- ENDCAP							
TECH. DESCRIPTION:									
CLAMP, TUBE: TYPE: ETEC-PL-G; COMMERCIAL SIZE: 250/6; PLAIN- ENDCAP; MATERIAL: AI ALLOY< 0.1% Cu; TUBE 1 DIAMETER ACCOMMODATED: 250X6 MM; MAXIMUM OPERATING POTENTIAL: 800 KV; 6MM WALL THICKNESS PLAIN END CAP; ESKOM DRAWING No. D-DT-6040 *									
SAP MATERIAL No.:		0589026							
SHORT DESCRIPTION:		CLAMP,TUBE:ETEC-PL-G;250/6R;PLAIN-ENDCAP							
TECH. DESCRIPTION:									
CLAMP, TUBE: TYPE: ETEC-PL-G; COMMERCIAL SIZE: 250/6R; PLAIN-ENDCAP; MATERIAL: AI ALLOY< 0.1% Cu; TUBE 1 DIAMETER ACCOMMODATED: 250X6 MM; MAXIMUM OPERATING POTENTIAL: 800 KV; 6MM WALL THICKNESS PLAIN END CAP; COLOUR RED (1580-Y90R IN ACCORDANCE WITH SANS 1091) POWDER COATED IN ACCORDANCE WITH SANS 1274; ESKOM DRAWING No. D-DT-6040 *									
SAP MATERIAL No.:		0589027							
SHORT DESCRIPTION:		CLAMP,TUBE:ETEC-PL-G;250/6W;PLAIN-ENDCAP							
TECH. DESCRIPTION:									
CLAMP, TUBE: TYPE: ETEC-PL-G; COMMERCIAL SIZE: 250/6W; PLAIN-ENDCAP; MATERIAL: AI ALLOY< 0.1% Cu; TUBE 1 DIAMETER ACCOMMODATED: 250X6 MM; MAXIMUM OPERATING POTENTIAL: 800 KV; 6MM WALL THICKNESS PLAIN END CAP; COLOUR WHITE POWDER COATED IN ACCORDANCE WITH SANS 1274; ESKOM DRAWING No. D-DT-6040 *									
SAP MATERIAL No.:		0589016							
SHORT DESCRIPTION:		CLAMP,TUBE:ETEC-PL-G;250/6B;PLAIN-ENDCAP							
TECH. DESCRIPTION:									
CLAMP, TUBE: TYPE: ETEC-PL-G; COMMERCIAL SIZE: 250/6B; PLAIN-ENDCAP; MATERIAL: AI ALLOY< 0.1% Cu; TUBE 1 DIAMETER ACCOMMODATED: 250X6 MM; MAXIMUM OPERATING POTENTIAL: 800 KV; 6MM WALL THICKNESS PLAIN END CAP; COLOUR BLUE (4050-B IN ACCORDANCE WITH SANS 1091) POWDER COATED IN ACCORDANCE WITH SANS 1274; ESKOM DRAWING No. D-DT-6040 *									
6	CLAMP CODES & DESCRIPTIONS CORRECTED, ADDED ITEM: CLAMP,TUBE:ETEC-DC-E;160/6;26.5C-ENDCAP			JUSTICE SHINTA	STEFAN TERBLANCHE	THEUNS MARAIS	04.11.2020		
5	ITEM TABLES ADDED, ADDITIONAL ITEMS ADDED, SAP NUMBERS CHANGED, SHORT AND TECHNICAL DESCRIPTIONS CHANGED AND STANDARD UNIQUE IDENTIFIER ADDED			P.A.T.	MARK PEFFER	THEUNS MARIAS	05.09.2014		
4	DIMENSION CHANGED			P.A.T.	T. NKAMBULE		12.08.2009		
REV	REVISION DESCRIPTION			BY	CHKD	AUTH	DATE	REF. DRAWINGS	
AUTH:	PHIL CROWDY	DATE:	12/96	SCALE NTS	 D-DT-6040		SAP No:		
CHKD:	C.B. CLARK	DATE:	12/96	CAD REF:			0589025		0589027 0589016
				SERIES 6000			0588584		
DRAWN:	J.F.SCHOLTZ	DATE:	10/96	FILE No:	7		3	6	
				6040					




NOTE: DRAWING NOT FOR MANUFACTURING PURPOSES

CODE	TUBE OUTSIDE DIAMETER "A" (mm)	TUBE WALL THICKNESS "C" (mm)	CONDUCTOR DIAMETER "B" (mm)	RATED VOLTAGE (kV RMS)	COLOUR	SAP NUMBER
ETEC-DC-A;80/8	80	8	26.5	145	—	0401649
ETEC-DC-C;120/4	120	4	26.5	145	—	0206320
ETEC-DC-C;120/6	120	6	26.5	145	—	0588585
ETEC-DC-E;160/6	160	6	26.5	145	—	0683289
ETEC-DC-F;200/6	200	6	26.5	800	—	0588586
ETEC-DC-F;200/6R	200	6	26.5	800	RED	0589017
ETEC-DC-F;200/6W	200	6	26.5	800	WHITE	0589018
ETEC-DC-F;200/6B	200	6	26.5	800	BLUE	0589019
ETEC-DC-G;200/6	200	6	38.3	800	—	0588587
ETEC-DC-H;250/6	250	6	26.5	800	—	0588588
ETEC-DC-H;250/6R	250	6	26.5	800	RED	0589020
ETEC-DC-H;250/6W	250	6	26.5	800	WHITE	0589021
ETEC-DC-H;250/6B	250	6	26.5	800	BLUE	0589022
ETEC-DC-J;250/6	250	6	38.3	800	—	0588589


APPLICATION NOTE: IN CHOOSING THE END CAP TO BE USED THE APPLICABLE TUBE OUTSIDE DIAMETER, TUBE WALL THICKNESS AS WELL AS DAMPING CONDUCTOR DIAMETER MUST BE CONSIDERED.

ITEM		:- CLAMP, TUBE: ETEC-DC; END CAP FOR DAMPING CONDUCTOR							
STANDARD UNIQUE IDENTIFIER		:- 240-53113923							
6	CLAMP CODES & DESCRIPTIONS CORRECTED, ADDED ITEM: CLAMP,TUBE:ETEC-DC-E;160/6;26.5C-ENDCAP			JUSTICE SHINTA	STEFAN TERBLANCHE	THEUNS MARAIS	04.11.2020		
5	ITEM TABLES ADDED, ADDITIONAL ITEMS ADDED, SAP NUMBERS CHANGED, SHORT AND TECHNICAL DESCRIPTIONS CHANGED AND STANDARD UNIQUE IDENTIFIER ADDED			P.A.T.	MARK PEPPER	THEUNS MARIAS	05.09.2014		
4	DIMENSION CHANGED			P.A.T.	T. NKAMBULE		12.08.2009		
REV	REVISION DESCRIPTION			BY	CHKD	AUTH	DATE	REF. DRAWINGS	
AUTH:	PHIL CROWDY	DATE:	12/96	SCALE			SAP No:		
				NTS					
				CAD REF:					
CHKD:	C.B. CLARK	DATE:	12/96	SERIES 6000	D-DT-6040		SET	SHEET	REV
DRAWN	J.F.SCHOLTZ	DATE:	10/96	FILE No:			7	4	6
:				6040					


SPEC. SHEET

SAP MATERIAL No.:		0401649								
SHORT DESCRIPTION:		CLAMP,TUBE:ETEC-DC-A;80/8;26.5C-ENDCAP								
TECH. DESCRIPTION:										
CLAMP, TUBE: TYPE: ETEC-DC-C; COMMERCIAL SIZE: 80/8;26.5 C-ENDCAP; MATERIAL: AI ALLOY< 0.1% Cu; TUBE 1 DIAMETER ACCOMMODATED: 80X8 MM; CONDUCTOR SIZE ACCOMMODATED: 26.5 MM; MAXIMUM OPERATING POTENTIAL: 145 KV; 8MM WALL THICKNESS END CAP WITH CONDUCTOR CLAMP; ESKOM DRAWING No. D-DT-6040 *										
SAP MATERIAL No.:		0206320								
SHORT DESCRIPTION:		CLAMP,TUBE:ETEC-DC-C;120/4;26.5C-ENDCAP								
TECH. DESCRIPTION:										
CLAMP, TUBE: TYPE: ETEC-DC-C; COMMERCIAL SIZE: 120/4;26.5 C-ENDCAP; MATERIAL: AI ALLOY< 0.1% Cu; TUBE 1 DIAMETER ACCOMMODATED: 120X4 MM; CONDUCTOR SIZE ACCOMMODATED: 26.5 MM; MAXIMUM OPERATING POTENTIAL: 145 KV; 4MM WALL THICKNESS END CAP WITH CONDUCTOR CLAMP; ESKOM DRAWING No. D-DT-6040 *										
SAP MATERIAL No.:		0588585								
SHORT DESCRIPTION:		CLAMP,TUBE:ETEC-DC-C;120/6;26.5C-ENDCAP								
TECH. DESCRIPTION:										
CLAMP, TUBE: TYPE: ETEC-DC-C; COMMERCIAL SIZE: 120/6;26.5 C-ENDCAP; MATERIAL: AI ALLOY< 0.1% Cu; TUBE 1 DIAMETER ACCOMMODATED: 120X6 MM; CONDUCTOR SIZE ACCOMMODATED: 26.5 MM; MAXIMUM OPERATING POTENTIAL: 145 KV; 6MM WALL THICKNESS END CAP WITH CONDUCTOR CLAMP; ESKOM DRAWING No. D-DT-6040 *										
SAP MATERIAL No.:		0683289								
SHORT DESCRIPTION:		CLAMP,TUBE:ETEC-DC-E;160/6;26.5C-ENDCAP								
TECH. DESCRIPTION:										
CLAMP, TUBE: TYPE: ETEC-DC-E; COMMERCIAL SIZE: 160/6;26.5 C-ENDCAP; MATERIAL: AI ALLOY< 0.1% Cu; TUBE 1 DIAMETER ACCOMMODATED: 160X6 MM; CONDUCTOR SIZE ACCOMMODATED: 26.5 MM; MAXIMUM OPERATING POTENTIAL: 145 KV; 6MM WALL THICKNESS END CAP WITH CONDUCTOR CLAMP; ESKOM DRAWING No. D-DT-6040 *										
SAP MATERIAL No.:		0588586								
SHORT DESCRIPTION:		CLAMP,TUBE:ETEC-DC-F;200/6;26.5C-ENDCAP								
TECH. DESCRIPTION:										
CLAMP, TUBE: TYPE: ETEC-DC-F; COMMERCIAL SIZE: 200/6;26.5 C-ENDCAP; MATERIAL: AI ALLOY< 0.1% Cu; TUBE 1 DIAMETER ACCOMMODATED: 200X6 MM; CONDUCTOR SIZE ACCOMMODATED: 26.5 MM; MAXIMUM OPERATING POTENTIAL: 800 KV; 6MM WALL THICKNESS END CAP WITH CONDUCTOR CLAMP; ESKOM DRAWING No. D-DT-6040 *										
6	CLAMP CODES & DESCRIPTIONS CORRECTED, ADDED ITEM: CLAMP,TUBE:ETEC-DC-E;160/6;26.5C-ENDCAP			JUSTICE SHINTA	STEFAN TERBLANCHE	THEUNS MARAIS	04.11.2020			
5	ITEM TABLES ADDED, ADDITIONAL ITEMS ADDED, SAP NUMBERS CHANGED, SHORT AND TECHNICAL DESCRIPTIONS CHANGED AND STANDARD UNIQUE IDENTIFIER ADDED			P.A.T.	MARK PEFFER	THEUNS MARIAS	05.09.2014			
4	DIMENSION CHANGED			P.A.T.	T. NKAMBULE		12.08.2009			
REV	REVISION DESCRIPTION			BY	CHKD	AUTH	DATE	REF. DRAWINGS		
AUTH:	PHIL CROWDY	DATE:	12/96	SCALE NTS	 D-DT-6040		SAP No:			
CHKD:	C.B. CLARK	DATE:	12/96	CAD REF:			0401649 0206320 0588585		0683289 0588586	
DRAWN:	J.F.SCHOLTZ	DATE:	10/96	SERIES 6000 FILE No: 6040			SET	SHEET	REV	
							7	5	6	

SPEC. SHEET

SAP MATERIAL No.:		0589017						
SHORT DESCRIPTION:		CLAMP,TUBE:ETEC-DC-F;200/6R;26.5C-ENDCAP						
TECH. DESCRIPTION:								
CLAMP, TUBE: TYPE: ETEC-DC-F; COMMERCIAL SIZE: 200/6R;26.5 C-ENDCAP; MATERIAL: AI ALLOY< 0.1% Cu; TUBE 1 DIAMETER ACCOMMODATED: 200X6 MM; CONDUCTOR SIZE ACCOMMODATED: 26.5 MM; MAXIMUM OPERATING POTENTIAL: 800 KV; 6MM WALL THICKNESS END CAP WITH CONDUCTOR CLAMP; COLOUR RED (1580-Y90R IN ACCORDANCE WITH SANS 1091) POWDER COATED IN ACCORDANCE WITH SANS 1274; ESKOM DRAWING No. D-DT-6040 *								
SAP MATERIAL No.:		0589018						
SHORT DESCRIPTION:		CLAMP,TUBE:ETEC-DC-F;200/6W;26.5C-ENDCAP						
TECH. DESCRIPTION:								
CLAMP, TUBE: TYPE: ETEC-DC-F; COMMERCIAL SIZE: 200/6W;26.5 C-ENDCAP; MATERIAL: AI ALLOY< 0.1% Cu; TUBE 1 DIAMETER ACCOMMODATED: 200X6 MM; CONDUCTOR SIZE ACCOMMODATED: 26.5 MM; MAXIMUM OPERATING POTENTIAL: 800 KV; 6MM WALL THICKNESS END CAP WITH CONDUCTOR CLAMP; COLOUR WHITE POWDER COATED IN ACCORDANCE WITH SANS 1274; ESKOM DRAWING No. D-DT-6040 *								
SAP MATERIAL No.:		0589019						
SHORT DESCRIPTION:		CLAMP,TUBE:ETEC-DC-F;200/6B;26.5C-ENDCAP						
TECH. DESCRIPTION:								
CLAMP, TUBE: TYPE: ETEC-DC-F; COMMERCIAL SIZE: 200/6B;26.5 C-ENDCAP; MATERIAL: AI ALLOY< 0.1% Cu; TUBE 1 DIAMETER ACCOMMODATED: 200X6 MM; CONDUCTOR SIZE ACCOMMODATED: 26.5 MM; MAXIMUM OPERATING POTENTIAL: 800 KV; 6MM WALL THICKNESS END CAP WITH CONDUCTOR CLAMP; COLOUR BLUE (4050-B IN ACCORDANCE WITH SANS 1091) POWDER COATED IN ACCORDANCE WITH SANS 1274; ESKOM DRAWING No. D-DT-6040 *								
SAP MATERIAL No.:		0588587						
SHORT DESCRIPTION:		CLAMP,TUBE:ETEC-DC-G;200/6;38.3C-ENDCAP						
TECH. DESCRIPTION:								
CLAMP, TUBE: TYPE: ETEC-DC-G; COMMERCIAL SIZE: 200/6;38.3 C-ENDCAP; MATERIAL: AI ALLOY< 0.1% Cu; TUBE 1 DIAMETER ACCOMMODATED: 200X6 MM; CONDUCTOR SIZE ACCOMMODATED: 38.3 MM; MAXIMUM OPERATING POTENTIAL: 800 KV; 6MM WALL THICKNESS END CAP WITH CONDUCTOR CLAMP; ESKOM DRAWING No. D-DT-6040 *								
SAP MATERIAL No.:		0588588						
SHORT DESCRIPTION:		CLAMP,TUBE:ETEC-DC-H;250/6;26.5C-ENDCAP						
TECH. DESCRIPTION:								
CLAMP, TUBE: TYPE: ETEC-DC-H; COMMERCIAL SIZE: 250/6;26.5 C-ENDCAP; MATERIAL: AI ALLOY< 0.1% Cu; TUBE 1 DIAMETER ACCOMMODATED: 250X6 MM; CONDUCTOR SIZE ACCOMMODATED: 26.5 MM; MAXIMUM OPERATING POTENTIAL: 145 KV; 6MM WALL THICKNESS END CAP WITH CONDUCTOR CLAMP; ESKOM DRAWING No. D-DT-6040 *								
6	CLAMP CODES & DESCRIPTIONS CORRECTED, ADDED ITEM: CLAMP,TUBE:ETEC-DC-E;160/6;26.5C-ENDCAP		JUSTICE SHINTA	STEFAN TERBLANCHE	THEUNS MARAIS	04.11.2020		
5	ITEM TABLES ADDED, ADDITIONAL ITEMS ADDED, SAP NUMBERS CHANGED, SHORT AND TECHNICAL DESCRIPTIONS CHANGED AND STANDARD UNIQUE IDENTIFIER ADDED		P.A.T.	MARK PEFFER	THEUNS MARIAS	05.09.2014		
4	DIMENSION CHANGED		P.A.T.	T. NKAMBULE		12.08.2009		
REV	REVISION DESCRIPTION		BY	CHKD	AUTH	DATE	REF. DRAWINGS	
AUTH:	PHIL CROWDY	DATE:	12/96			SAP No:		
CHKD:	C.B. CLARK	DATE:	12/96			0589017		0588587
						0589018		
DRAWN	J.F.SCHOLTZ	DATE:	10/96	D-DT-6040		0589019	0588588	
						SET	SHEET	REV
:						7	6	6

SPEC. SHEET

SAP MATERIAL No.:		0589020						
SHORT DESCRIPTION:		CLAMP,TUBE:ETEC-DC-H;250/6R;26.5C-ENDCAP						
TECH. DESCRIPTION:								
CLAMP, TUBE: TYPE: ETEC-DC-H; COMMERCIAL SIZE: 250/6R;26.5 C-ENDCAP; MATERIAL: AI ALLOY< 0.1% Cu; TUBE 1 DIAMETER ACCOMMODATED: 250X6 MM; CONDUCTOR SIZE ACCOMMODATED: 26.5 MM; MAXIMUM OPERATING POTENTIAL: 800 KV; 6MM WALL THICKNESS END CAP WITH CONDUCTOR CLAMP; COLOUR RED (1580-Y90R IN ACCORDANCE WITH SANS 1091) POWDER COATED IN ACCORDANCE WITH SANS 1274; ESKOM DRAWING No. D-DT-6040 *								
SAP MATERIAL No.:		0589021						
SHORT DESCRIPTION:		CLAMP,TUBE:ETEC-DC-H;250/6W;26.5C-ENDCAP						
TECH. DESCRIPTION:								
CLAMP, TUBE: TYPE: ETEC-DC-H; COMMERCIAL SIZE: 250/6W;26.5 C-ENDCAP; MATERIAL: AI ALLOY< 0.1% Cu; TUBE 1 DIAMETER ACCOMMODATED: 250X6 MM; CONDUCTOR SIZE ACCOMMODATED: 26.5 MM; MAXIMUM OPERATING POTENTIAL: 800 KV; 6MM WALL THICKNESS END CAP WITH CONDUCTOR CLAMP; COLOUR WHITE POWDER COATED IN ACCORDANCE WITH SANS 1274; ESKOM DRAWING No. D-DT-6040 *								
SAP MATERIAL No.:		0589022						
SHORT DESCRIPTION:		CLAMP,TUBE:ETEC-DC-H;250/6B;26.5C-ENDCAP						
TECH. DESCRIPTION:								
CLAMP, TUBE: TYPE: ETEC-DC-H; COMMERCIAL SIZE: 250/6B;26.5 C-ENDCAP; MATERIAL: AI ALLOY< 0.1% Cu; TUBE 1 DIAMETER ACCOMMODATED: 250X6 MM; CONDUCTOR SIZE ACCOMMODATED: 26.5 MM; MAXIMUM OPERATING POTENTIAL: 800 KV; 6MM WALL THICKNESS END CAP WITH CONDUCTOR CLAMP; COLOUR BLUE (4050-B IN ACCORDANCE WITH SANS 1091) POWDER COATED IN ACCORDANCE WITH SANS 1274; ESKOM DRAWING No. D-DT-6040 *								
SAP MATERIAL No.:		0588589						
SHORT DESCRIPTION:		CLAMP,TUBE:ETEC-DC-J;250/6;38.3C-ENDCAP						
TECH. DESCRIPTION:								
CLAMP, TUBE: TYPE: ETEC-DC-J; COMMERCIAL SIZE: 250/6;38.3 C-ENDCAP; MATERIAL: AI ALLOY< 0.1% Cu; TUBE 1 DIAMETER ACCOMMODATED: 250X6 MM; CONDUCTOR SIZE ACCOMMODATED: 38.3; MAXIMUM OPERATING POTENTIAL: 800 KV6MM WALL THICKNESS END CAP WITH CONDUCTOR CLAMP; ESKOM DRAWING No. D-DT-6040 *								
6	CLAMP CODES & DESCRIPTIONS CORRECTED, ADDED ITEM: CLAMP,TUBE:ETEC-DC-E;160/6;26.5C-ENDCAP		JUSTICE SHINTA	STEFAN TERBLANCHE	THEUNS MARAIS	04.11.2020		
5	ITEM TABLES ADDED, ADDITIONAL ITEMS ADDED, SAP NUMBERS CHANGED, SHORT AND TECHNICAL DESCRIPTIONS CHANGED AND STANDARD UNIQUE IDENTIFIER ADDED		P.A.T.	MARK PEFFER	THEUNS MARIAS	05.09.2014		
4	DIMENSION CHANGED		P.A.T.	T. NKAMBULE		12.08.2009		
REV	REVISION DESCRIPTION			BY	CHKD	AUTH	DATE	REF. DRAWINGS
AUTH:	PHIL CROWDY	DATE:	12/96	<div>SCALE NTS</div> <div>CAD REF: SERIES 6000</div> <div>FILE No: 6040</div> <div> D-DT-6040</div>	SAP No:			
CHKD:	C.B. CLARK	DATE:	12/96		0589020		0589022	
DRAWN	J.F.SCHOLTZ	DATE:	10/96		0589021		0588589	
					SET	SHEET	REV	
:				7		7		6